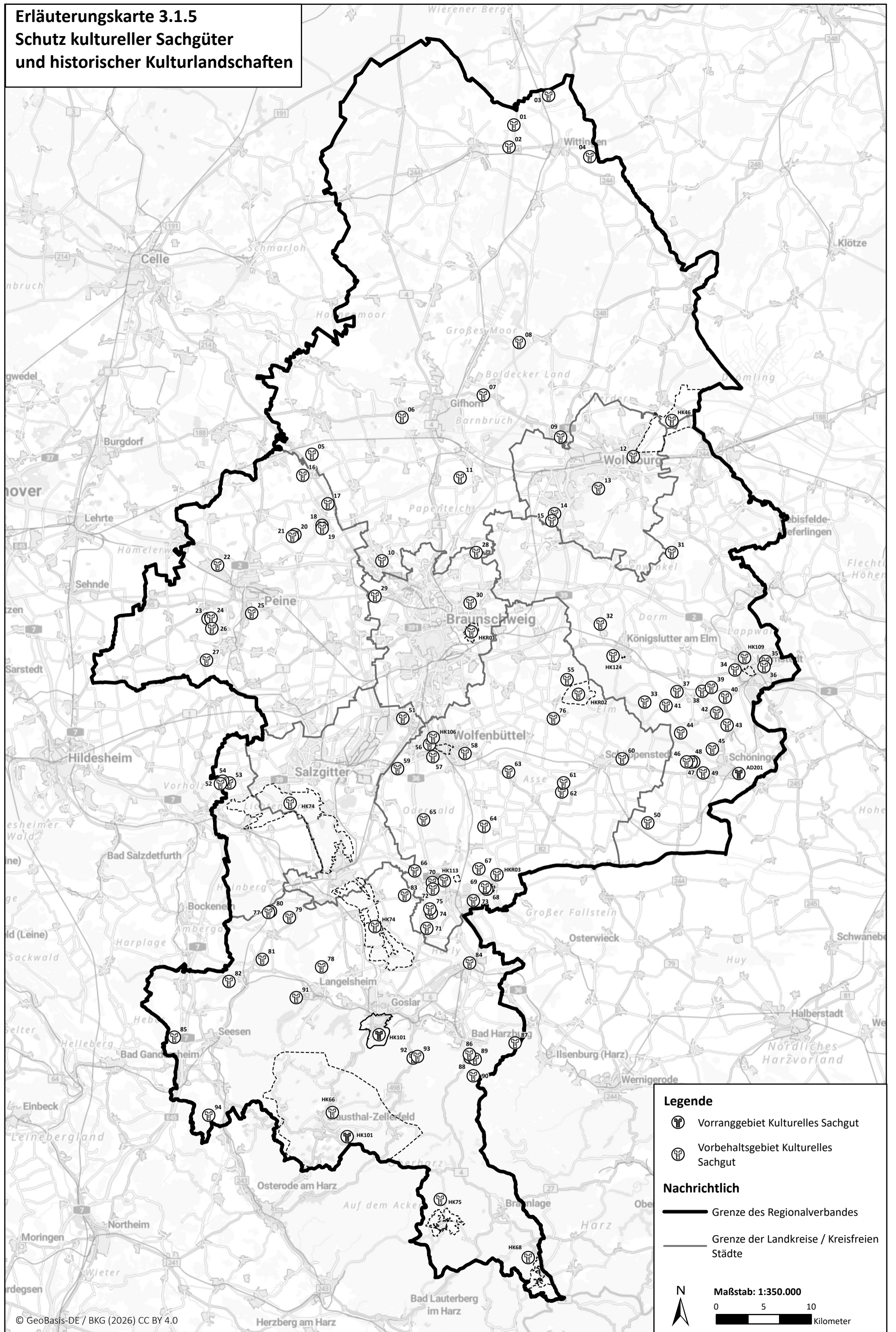






**Erläuterungskarte 3.1.5**  
**Schutz kultureller Sachgüter**  
**und historischer Kulturlandschaften**



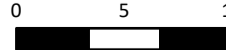
**Legende**

-  Vorranggebiet Kulturelles Sachgut
-  Vorbehaltsgebiet Kulturelles Sachgut

**Nachrichtlich**

-  Grenze des Regionalverbandes
-  Grenze der Landkreise / Kreisfreien Städte

**Maßstab: 1:350.000**

0 5 10  
 Kilometer

N  
